



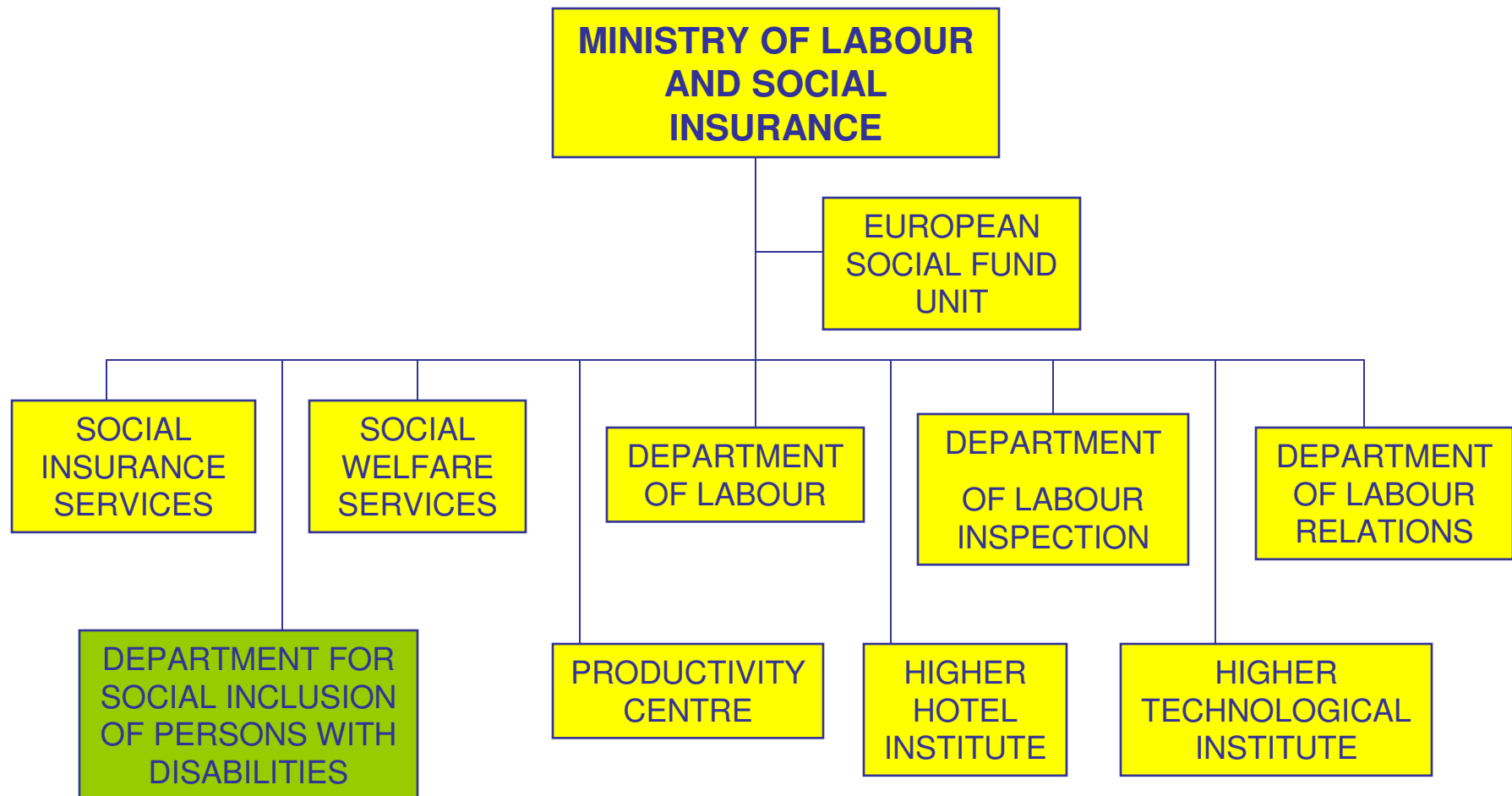
**REPUBLIC OF CYPRUS  
MINISTRY OF LABOUR AND  
SOCIAL INSURANCE**



**DEPARTMENT FOR SOCIAL INCLUSION  
OF PERSONS WITH DISABILITIES**

Postal address:  
Department for Social Inclusion  
of Persons with Disabilities  
1430 Nicosia, Cyprus  
Tel: 00357 22 406 406,  
Fax: 00357 22 406 555  
e-mail: [info@dsid.mlsi.gov.cy](mailto:info@dsid.mlsi.gov.cy),  
website: [www.mlsi.gov.cy/dsid](http://www.mlsi.gov.cy/dsid)

## A NEW DEPARTMENT IN THE MINISTRY AS FROM 1.1.2009



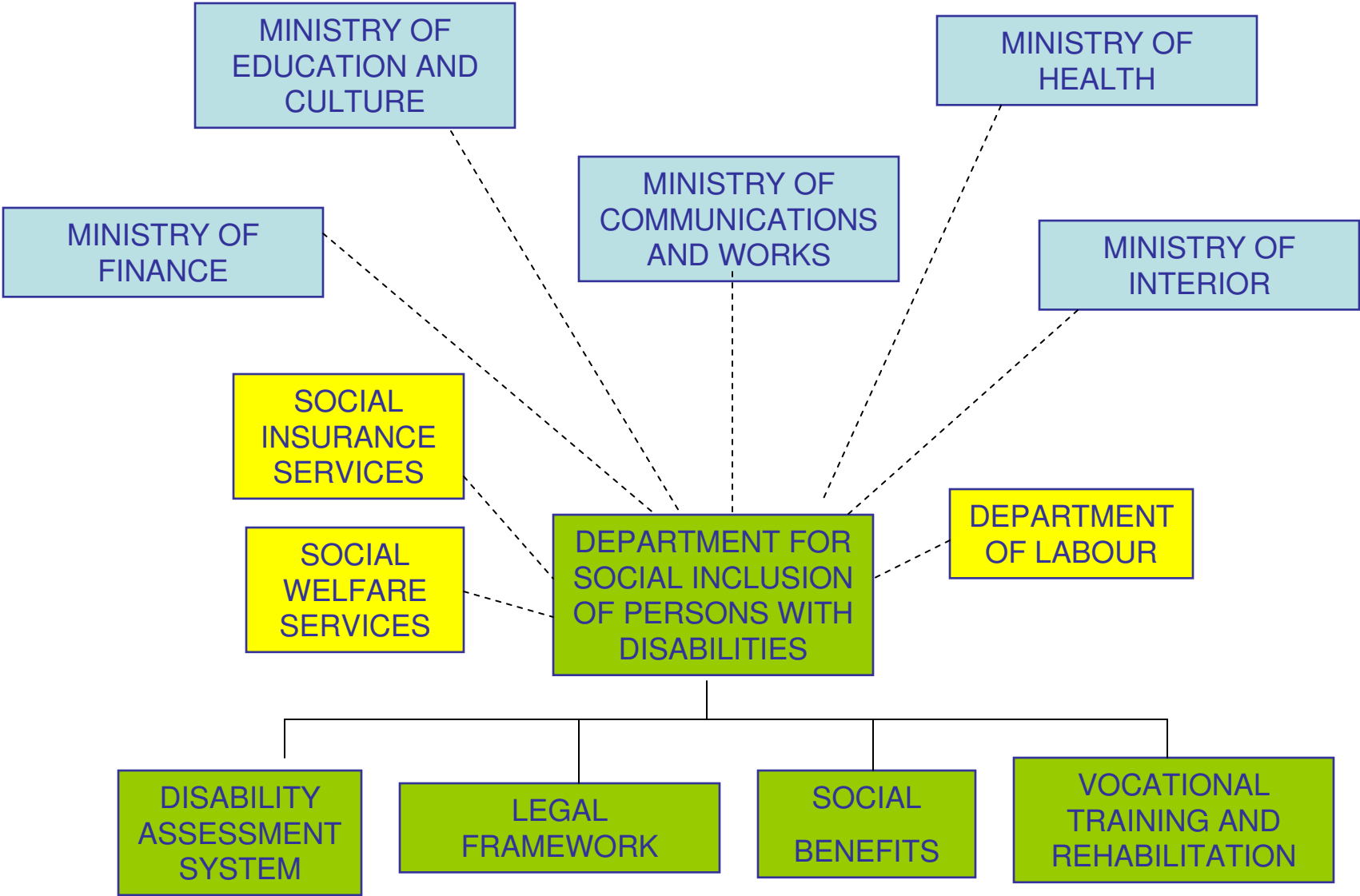
## **MISSION, VISION AND STRATEGIC GOAL OF THE DEPARTMENT FOR SOCIAL INCLUSION OF PERSONS WITH DISABILITIES**

**MISSION:** To undertake as a central agent the formulation, co-ordination and implementation of social policies for persons with disabilities in co-operation with co-responsible ministries and services as well as the Pancyprian Confederation of the Organisations of Persons with Disabilities.

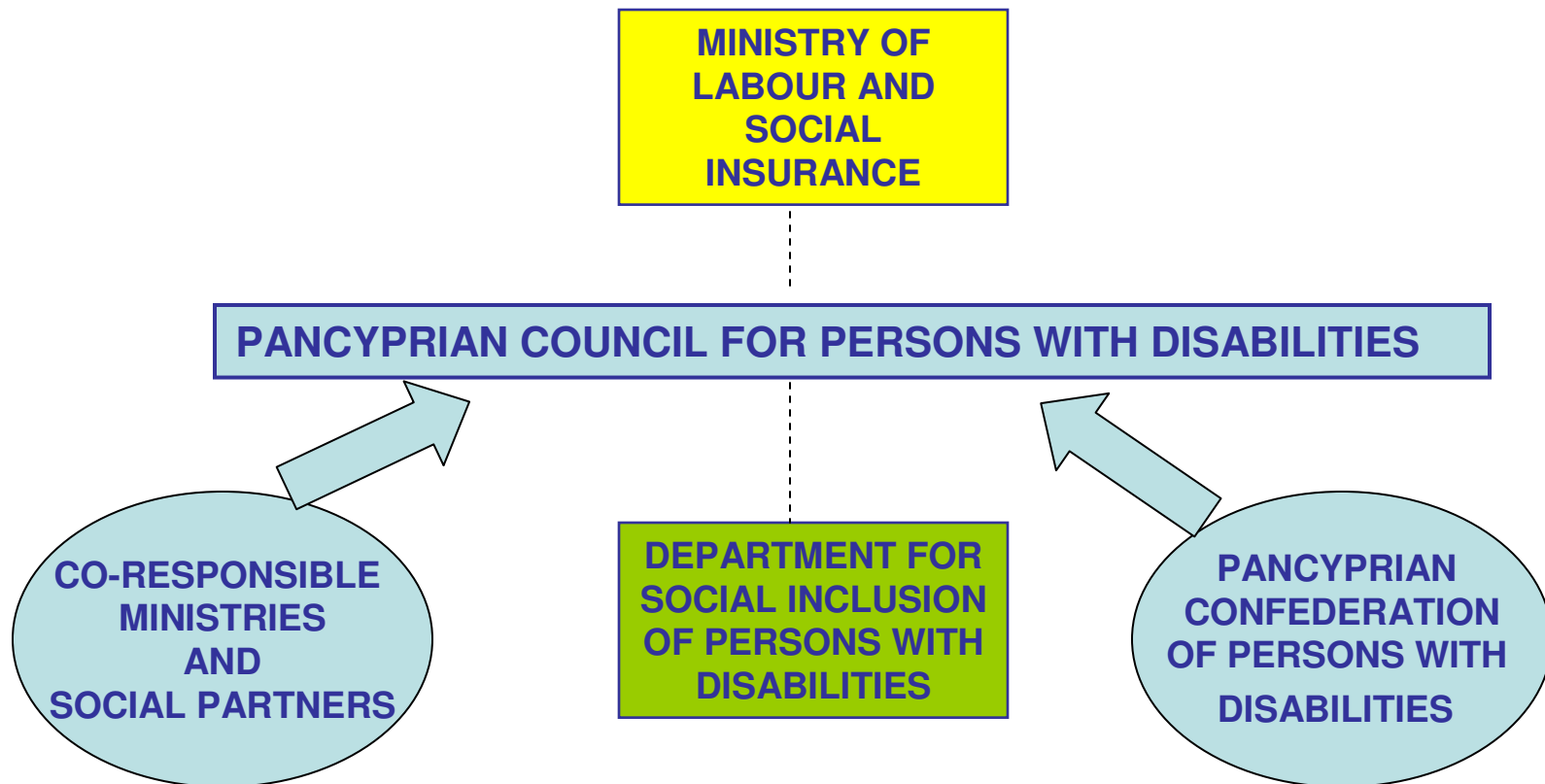
**VISION:** the improvement of quality of life of persons with disabilities and their social inclusion.

**STRATEGIC GOAL:** the design and implementation of reforms that will create new prospects for social inclusion of persons with disabilities.

# DISABILITY AND STATE SERVICES



# DISABILITY CONSULTATION WITH CIVIL SOCIETY



## **DISABILITY POLICIES IN CYPRUS**

### **A STRONG LEGISLATIVE FRAMEWORK**

- Ratification as from 4.3.2011 of the UN Convention for the Rights of Persons with Disabilities, being the future road map for disability policies, programs and actions.
- General Law for Persons with Disabilities providing for the protection and promotion of the rights of persons with disabilities.
- Law for the Consultation between State Services and the Confederation of Organisations of Persons with Disabilities
- Specialized Laws regarding education, employment, financial assistance etc.

## DISABILITY POLICIES IN CYPRUS – cont.

### **Professional assessment of disability**

- Design and application of a new System for the Assessment of Disability and Functioning based on the International Classification of Functioning, Disability and Health (ICF) of WHO.
- Three new Disability Assessment Centres in Cyprus: one in Nicosia in 2011 and two in Limassol and Larnaca in 2012

## DISABILITY POLICIES IN CYPRUS – cont.

### Inclusive Education

- Ministry of Education and Culture.
- Aim is the inclusion of children with disabilities in mainstreaming schools with support by school assistants and therapists.
- For children with severe disabilities special schools operate.



## DISABILITY POLICIES IN CYPRUS – cont.

### Vocational Training and Employment

- Enforcement of a new law approved in December 2009 for the recruitment of persons with disabilities in the wider public sector at a quota of 10% of vacant posts.
- Financial incentives for recruitment of persons with disabilities in the private sector.
- Supported employment programme
- Sheltered workshops.
- Need for new and modern training and employment programmes. Project in progress for the establishment of a new semi-government Organisation for Vocational Training and Rehabilitation of Persons with Disabilities.

## DISABILITY POLICIES IN CYPRUS – cont.

### Independent or supported living

- Adequate standard of living by public financial assistance.
- Disability monthly allowances and grants.
- Technical aids and equipment.
- Support to NGO's and Local Authorities for the operation of Day Care Centres and Homes in the Community.

## DISABILITY POLICIES IN CYPRUS – cont.

### **Accessibility**

- Regulations for accessibility in public buildings, public roads, public transport, parking for persons with disabilities.
- A long way to go from theory in practice until the fulfillment of the rights of persons with disabilities to equal treatment in the provision of goods and services and in accessibility in communications, transport, leisure and recreation etc.

## THE FUTURE AHEAD

UN Convention  
for the rights  
of persons with  
Disabilities

Better use of Resources

# THANK YOU